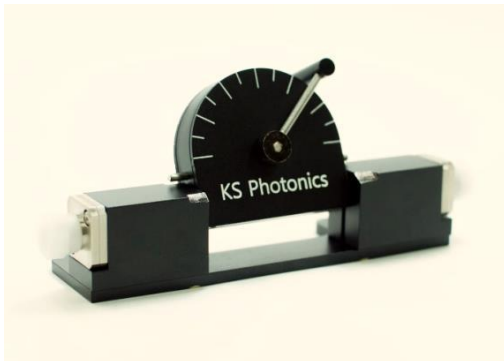
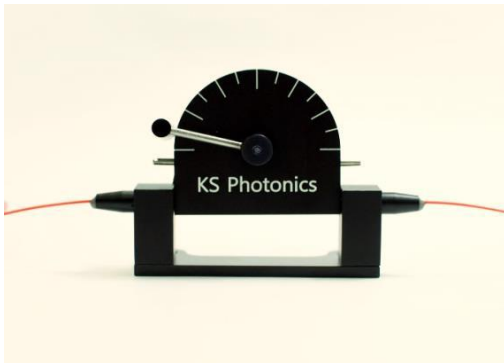


# Single Paddle Polarization Controller

All-new fiber-optic single paddle polarization controller



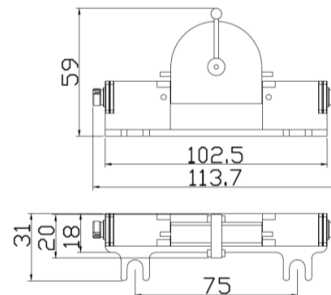
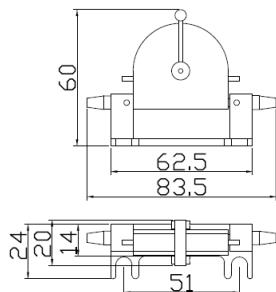
## Features & Applications

### FEATURES:

- Compact new single paddle design
- No squeezing fiber
- Short fiber length
- Negligible loss and back reflection
- Wavelength insensitive
- High extinction (> 30 dB)
- Easy to use (intuitive control)
- Available with or without connectors

### APPLICATIONS:

- Optical communication
- Fiber optic sensors
- Component testing
- Fiber laser
- PDL measurement



For more information please contact Phoenix sales:  
[sales@phoenixphotonics.com](mailto:sales@phoenixphotonics.com) or visit us at  
[www.phoenixphotonics.com](http://www.phoenixphotonics.com)

**SPECIFICATION**

|                                    |                  |
|------------------------------------|------------------|
| Polarization Extinction Ratio (dB) | > 30             |
| Insertion loss (dB)                | < 0.3            |
| Polarization dependent loss (dB)   | < 0.03 (Typical) |
| Operation range (nm)               | 1260 - 1625      |

**ORDERING INFORMATION:**

